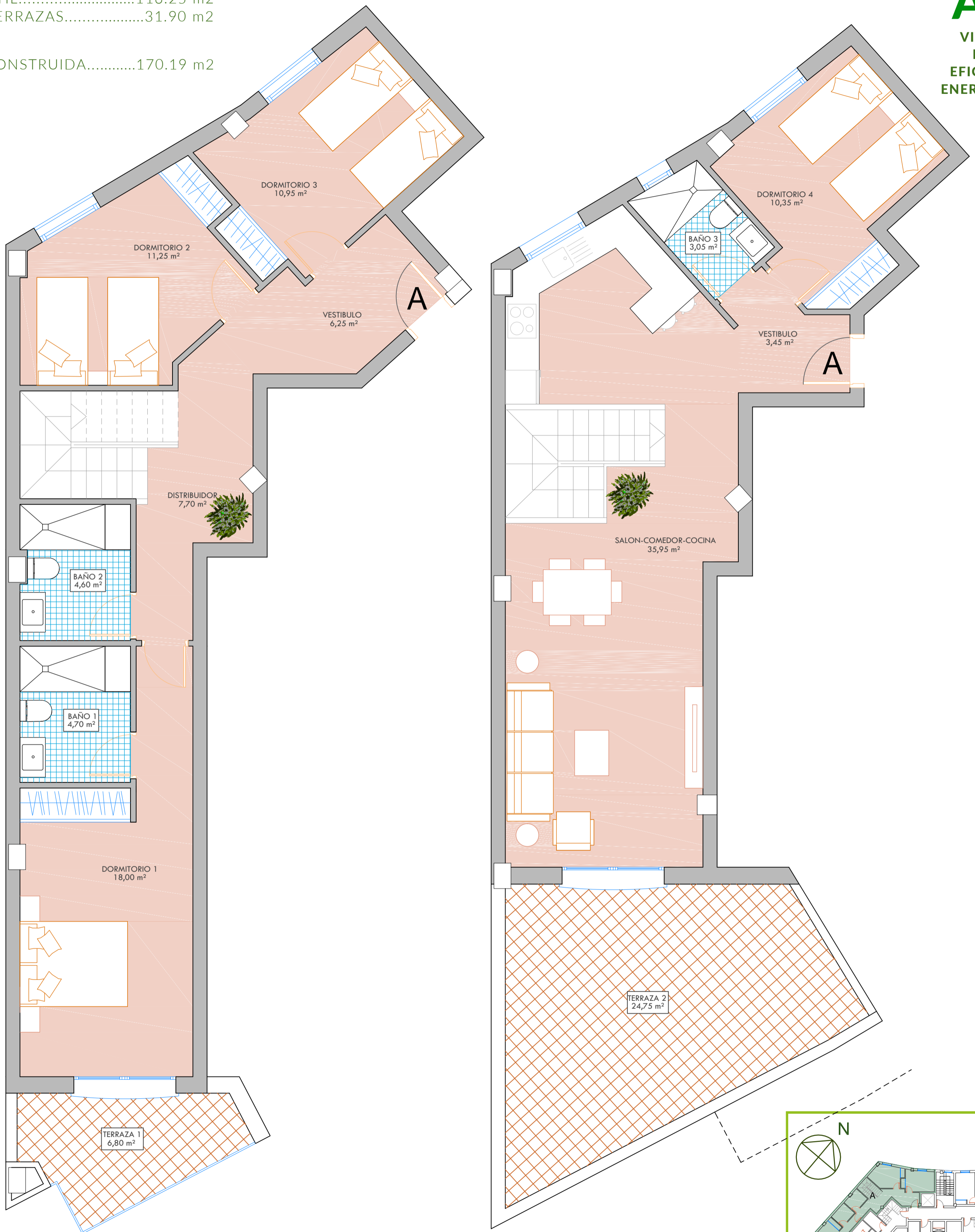


ÁTICO DÚPLEX TIPO A.2 3 DORMITORIOS.

SUP. ÚTIL.....116.25 m<sup>2</sup>  
SUP. TERRAZAS.....31.90 m<sup>2</sup>

SUP. CONSTRUIDA.....170.19 m<sup>2</sup>



0 1 m 2 m  
ESCALA GRAFICA